

The background is a deep purple and blue space scene. In the top left is a large planet with horizontal stripes. In the top center is a smaller planet with a ring. In the bottom right is a large, cratered moon. An astronaut in a white suit is floating in the lower left, holding a coiled rope. The background is filled with numerous small white stars and larger, four-pointed starbursts. The text is centered in a white, stylized font.

THE COLLEGE JOURNEY @TIDE ACADEMY

Hello!



I am Lara Sandora

I am the 11th grade and College Counselor at TIDE Academy. I have more than two decades of experience in public high schools and college admissions work. And I'm the parent of two (very different!) teen boys.

LAND ACKNOWLEDGEMENT



TIDE Academy is located on the ancestral homeland of the Ohlone peoples, the original stewards of this land. Please join us in acknowledging and honoring their ancestors, their elders, and their communities.

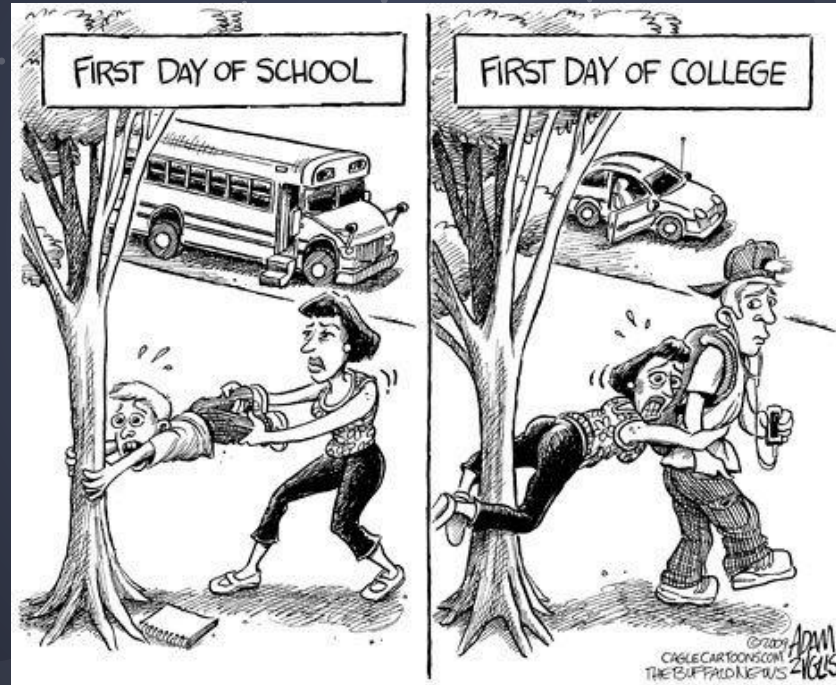
The background is a deep purple and blue space scene. In the upper left, there is a small cratered planet and a larger planet with a ring. In the lower left, an astronaut is floating with a coiled rope. On the right side, there is a large planet with horizontal stripes. The entire scene is filled with numerous small white stars and larger, multi-pointed starburst graphics.

“

“There are hundreds of paths up the mountain, all leading in the same direction, so it doesn't matter which path you take. The only one wasting time is the one who runs around and around the mountain, telling everyone that his or her path is wrong.”

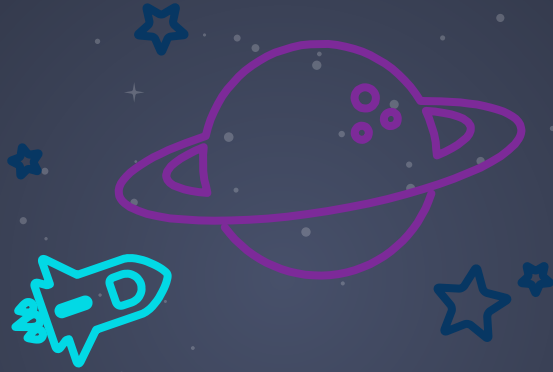
- Hindu proverb

DOES THIS RESONATE FOR YOU?



Adam Zyglis

THERE ARE INFINITE OPTIONS



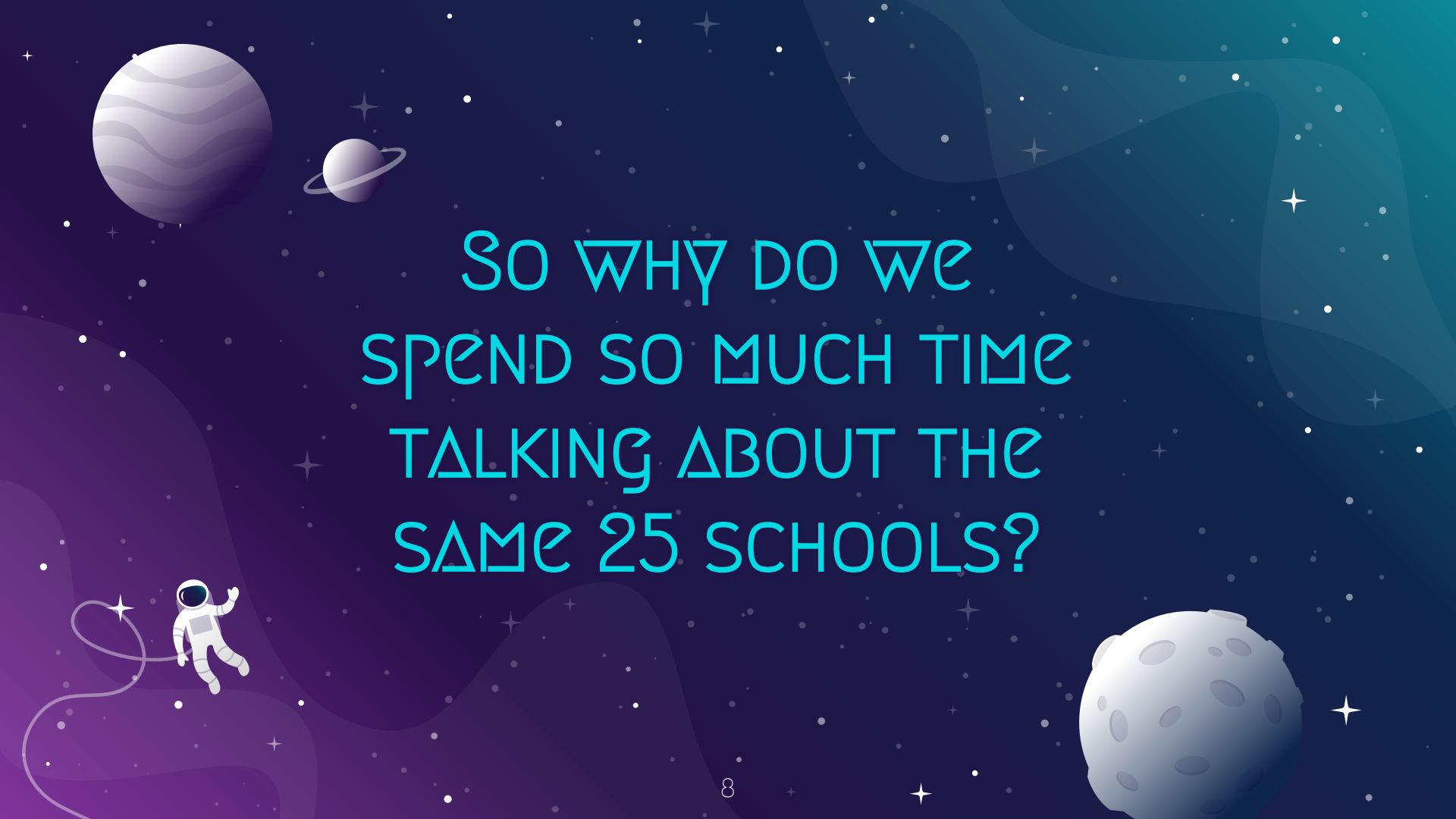
The goal is to determine what the best first step after TIDE should be for each student.



3,982

Degree-granting institutions in the United States.

Plus thousands more around the globe.



SO WHY DO WE
SPEND SO MUCH TIME
TALKING ABOUT THE
SAME 25 SCHOOLS?

KEEP AN OPEN MIND...



A stylized world map with a dark blue background and white landmasses. The map is surrounded by a space-themed border featuring a purple planet with a ring, a blue planet, a comet, and various stars. Several blue 'X' marks are placed on the map to indicate locations. A blue rectangular box with the text 'TIDE Academy' is positioned over the North Atlantic region.

TIDE Academy

The background is a deep purple and blue space scene. In the top left, there's a large planet with horizontal stripes. Below it is a smaller planet with a ring. In the top right, an astronaut in a white suit is floating, holding a long, thin, looping rope. In the bottom right, there's a large, cratered moon. The sky is filled with numerous small white stars and larger, four-pointed starbursts. There are also some soft, wavy, light blue and purple shapes floating in the background, resembling nebulae or gas clouds.

1.

ΔACADEMICS

Exploring interests and learning to learn



ACADEMIC FACTORS

Course Selection

Being enrolled at TIDE ensures that students are enrolled in a rigorous schedule, including several dual enrollment courses each year.

Grades

Finding success in those classes will vary among students. Some classes will feel easier, some will feel harder. It is most important to grow and learn each semester, but earning higher grades will allow for more college options.

Engagement with learning - education is not transactional

High school is a great time to try new things - and learn what is a "yes" and what is a "no" for the student. If you choose single credit (concurrent enrollment courses) in addition to dual credit courses, then those classes should be another chance to explore.

The background is a deep blue space filled with white stars of various sizes. In the top left, there is a large planet with horizontal stripes. Below it is a smaller planet with a ring. In the top right, an astronaut in a white suit is floating, holding a long, thin, looping rope. In the bottom right, there is a large, cratered moon. The overall theme is space exploration and discovery.

2.

SOCIAL & EMOTIONAL

Being college-ready beyond
the classroom



WHAT ARE THE ROLES AND RESPONSIBILITIES

The Student

Is the lead astronaut on the voyage. They can gather input from other astronauts, but they will live with results of any and all choices.

The Family

Can and should provide guardrails and boundaries, but cannot make decisions for the student. Most students will be 18 by the end of this process, so they need to practice their autonomy now.

The School Staff

Can provide a map for the voyage, and fuel along the way, but the student is the captain of the voyage.



HOW TO RAISE AN ADULT: CAN YOUR TEEN....?

Cook a basic meal - including planning & shopping

Launder & put away their own clothes

Pump gas & change a tire (& drive safely, if of age)

Handle basic cleaning & maintenance tasks - lawn mowing, vacuuming, unclogging drains

Interview for & obtain a job - including choosing appropriate attire

Manage their own medications/vitamins & schedule a medical appointment

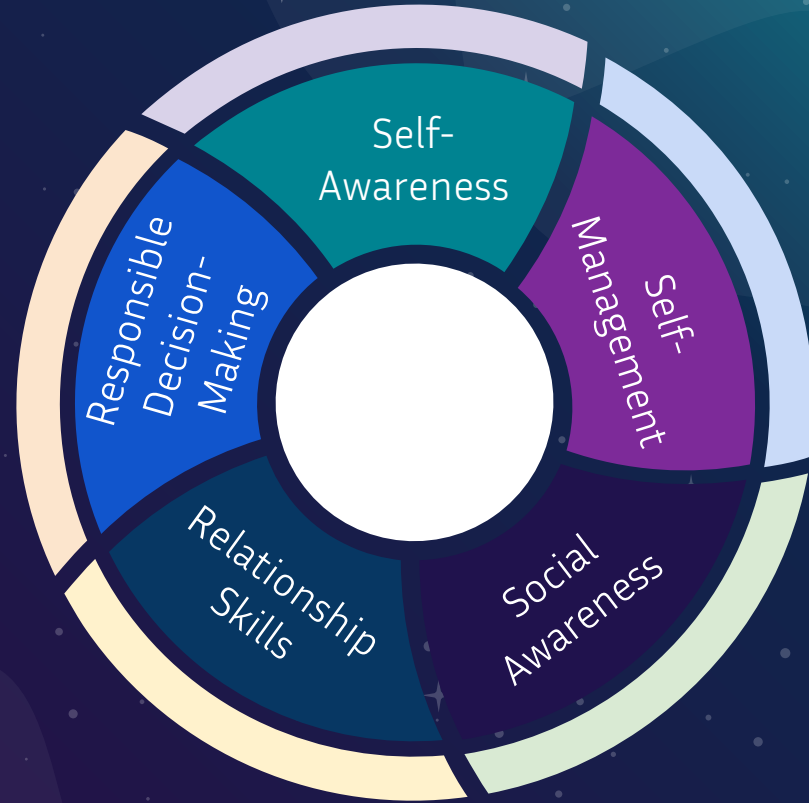
★ ΔVOID THE ★ BOOMERANG

It is important to build social emotional skills to ensure students can stay and graduate - and those skills help in the application process as well.



THE CASEL COMPETENCIES: SURVIVE VS THRIVE

Practice these skills
whenever possible- at
home and at school.



The background is a deep purple and blue space scene. In the top left, there's a large planet with horizontal stripes. Below it is a smaller planet with a ring. In the top right, an astronaut in a white suit floats, holding a long, looping tether. In the bottom right, there's a large, cratered moon. The background is filled with numerous small white stars and larger, four-pointed starburst shapes. Abstract, wavy shapes in shades of purple and blue are scattered throughout the scene.

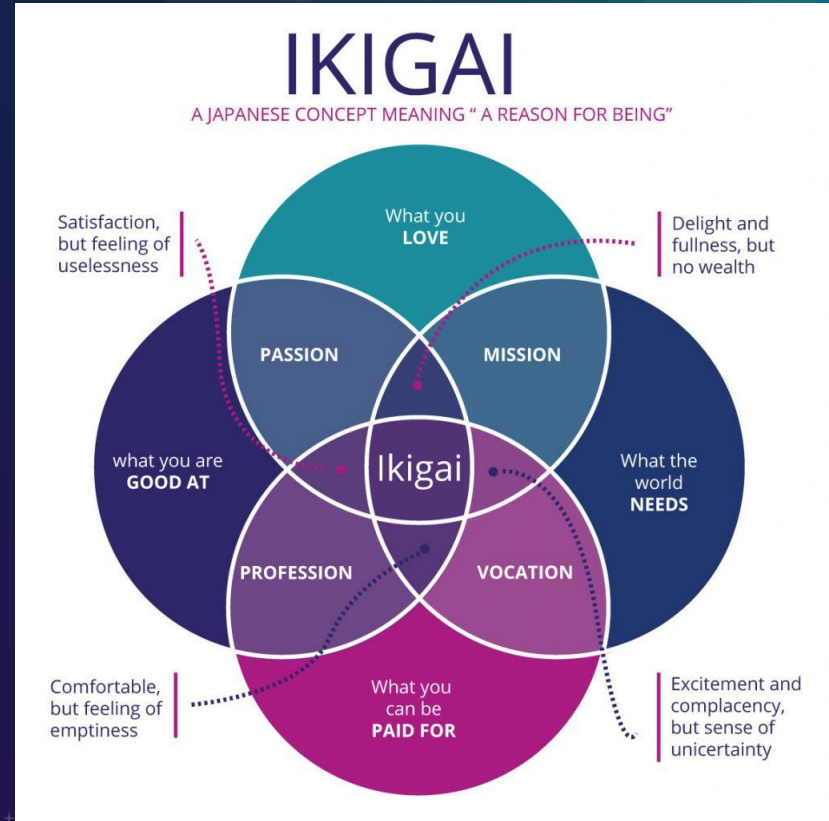
3.

POST-SECONDARY EXPLORATION

The college search process

THE SEARCH FOR IKIGAI

- ★ What are you good at? What are your strengths?
- ★ What do you love? What delights you?
- ★ What does the world need? How can you serve or support others?
- ★ What can you be paid for? And how and where do you want to live?





REFRAMING THE COLLEGE SEARCH

College acceptance is not a finish line.

Life does not end at 17 1/2 so it's important to remember that college is a part of the journey, not the end point.

There is more than one right answer.

There are thousands of colleges to choose from, not just the same 25 that "everyone" seems to talk about.

There are no sure things.

No number of college classes, no GPA, no number of clubs/sports/volunteer activities can or will guarantee admissions to anyone at any school.



REFRAMING THE COLLEGE SEARCH

This is a two-way street.

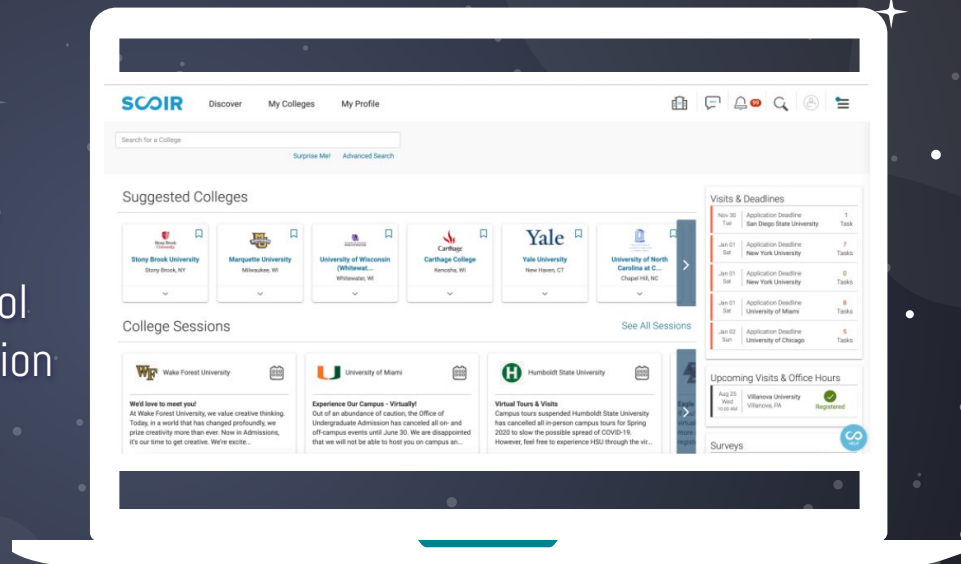
- Students should "interview" colleges to see if each is a fit for them - and reject any schools that don't meet THEIR criteria.

This is YOUR story.

The one thing that only you can share with the world (and college admissions offices) is YOUR story. Spend time reflecting on how you arrived at this point and how you want to shape the chapter ahead. You don't need to have a vision of your life at 37, but you should consider how what happened in your life at 3 and 7 and 13 affect who you are at 17.

Introducing Scoir

The College and Career Planning Tool
we will use to support the exploration
and applications processes.



NEXT STEPS:

Exploration can take many forms - get on college campuses whenever and wherever possible (even more important as the pandemic continues). Ask questions of any all adults you know - what did they gain from their college experience? Would they choose that college again?

EXPLORE

A relatively short, though often intense, part of the process. If the explore and search process has been thoughtful, then the application process will be focused and less stressful.

SEARCH

APPLY

THRIVE

The search process takes place as students begin to understand the characteristics they are seeking - and what they hope to gain from their college experience, then they search for schools who will provide those.

Thriving does not mean that every moment of every day is perfect - if that was the case, then growth would never occur. But we want students to land in a place where they are free to learn, connect with others and be their best selves.

RECOMMENDED READING

**Where you Go is Not Who'll
You Be: An Antidote to the
College Admissions Mania**

Frank Bruni



**The Price You Pay for
College: An Entirely New
Road Map for the Biggest
Financial Decision Your
Family Will Ever Make**

Ron Leiber



**Who Gets in and Why: A Year
Inside College Admissions**

Jeff Selingo



**The Truth About College
Admissions: A Family Guide
to Getting In and Staying
Together**

Brennan Barnard & Rick Clark





THANKS!

CREDITS

Special thanks to all the people who made and released these awesome resources for free:

- ★ Presentation template by [SlidesCarnival](#)
- ★ Photographs by [Unsplash](#)